



The Caltrux 5th Wheel

WEEKLY NEWS & INFORMATION FROM THE CALIFORNIA TRUCKING ASSOCIATION



**Make The Change To
Renewable Diesel Today**

DIESEL DIRECT **NESTE MY**
Supply, Delivery, Management. Renewable Diesel

**Convenient 24/7 Premium-Quality
Fuel Delivery Near You.**

Call us at (888) 900-7787 or order online at www.dieseldirect.com

FMCSA Removes Three Devices from Registered List

On Monday, the **U.S. Department of Transportation's Federal Motor Carrier Safety Administration (FMCSA)** removed three devices from the agency's list of electronic logging devices (ELDs).

- **Pioneer Safety Solutions LLC**
 - Device Name: PSS ELD
 - Model Number: PRS
 - ELD Identifier: PRS271
- **Black Bear ELD**
 - Device Name: Black Bear ELD
 - Model Number: BRS
 - ELD Identifier: BRS254
- **Rollingtrans**
 - Device Name: RT ELD Plus - ACCURATE ELITE
 - Model Number: RT-ELITE-BLE3647
 - ELD Identifier: RTEL47

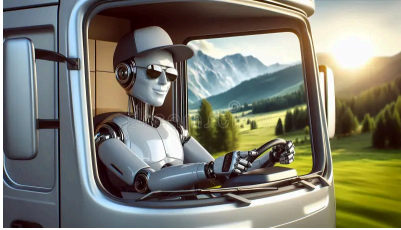


Motor carriers have up to 60 days to replace the revoked ELDs with compliant ELDs. FMCSA will send an industry-wide email to inform motor carriers that anyone using the revoked ELDs must take the following steps:

1. Discontinue using the revoked ELDs and revert to paper logs or logging software to record required hours of service data.
2. Replace the revoked ELDs with compliant ELDs from the **Registered Devices list** before February 7, 2026.

For more information on ELDs, visit [FMCSA's ELD website](#).

DMV Opens Comment Period on Autonomous Heavy- and Light-Duty Vehicles



The **California DMV** released revised proposed regulations last week that would allow the testing and deployment of heavy-duty autonomous vehicle technology on California roadways. The 15-day public comment period **ends next Thursday, December 18**, and the modifications reflect feedback received during the initial public comment period this past June.

Below are links to the notice of modifications, statement of reasons, as well as the revised regulations themselves for your review:

- [Notice of Modifications to Text of Proposed Regulations](#)
- [Statement of Reasons for the Modified Regulatory Text](#)
- [Express Terms - Title 13, Article 3.7](#)
- [Express Terms - Title 13, Article 3.8](#)

If you have any questions or concerns on the revised proposal before the December 18th deadline, please send your comments to Nick Chiappe at nchiappe@caltrux.org.

Update on Non-Domiciled CDLs

As we've reported in the past, on November 6th the **California Department of Motor Vehicles (DMV)** sent approximately **17,000 letters to non-domiciled CDL holders** informing them that their CDLs will be cancelled after 60 days.



You can [click here](#) to view a sample letter and review the full details of the notice sent to affected drivers.

This is a result of an audit performed by **FMCSA**, which found California out of compliance with commercial driver licensing regulations, including issuing non-domiciled CDLs with an expiration date extending beyond the expiration date of a driver's legal presence documents.

On November 13, the US Court of Appeals for D.C. issued a **full stay of enforcement** pending review of FMCSA's Interim Final Rule (IFR) regarding non-domiciled CDLs.

As a result of the stay, implementation of the IFR is paused and will remain inactive until the court publishes a decision on the merits of the case.

However, the enforcement stay will **not** affect CA DMV's notice sent to non-domiciled CDL holders as indicated by the agency. **At this time, affected non-domiciled CDL holders will still have their license cancelled at the conclusion of the 60 day period, which will be on January 6, 2026.**

The situation remains fluid, and policy changes may occur before the end of the 60 day period. CTA will notify members of any updates or new information.

If you have any questions or concerns, please contact [Nick Chiappe](#).

AMC26: Book a Room & Register Now!

We're only six weeks away from **CTA's 72nd Annual Membership Conference (AMC26)** and if you haven't already registered and made your plans, time is running out!

Over AMC26's three-days - **January 21 to 23** - participate in informative sessions by day and relax among the extensive amenities by evening in and around the **Monterey Plaza Hotel & Spa**.



As we add details to our [AMC26 schedule](#) we also wanted to share a bit of logistical information for our southern California members considering flying in to Monterey.

Airfare for the week of the event remains quite affordable as of this week, with roundtrips from airports in the southland starting as low as \$124.

There's also a discounted group room rate at our host hotel of \$289 plus taxes and fees expires on January 5th. [Visit Monterey Plaza Rooms](#) to reserve your room online.

Be part of "Driving the Economy, Steering the Future" - join us at AMC26!

[Click Here for Details](#)

EQUIPMENT LOANS
AS LOW AS
5.99%
INTEREST RATE

(209) 944-1516 | (925) 308-7545

BAC Community Bank Member FDIC

We're with you for the long
HAUL

crossroads
Equipment Lease & Finance

AWARD NOMINATIONS

Allied Conference Seeks Joe Kent Award Noms

The **Joe Kent Award** celebrates an active CTA Allied member who has given generous amounts of time for the greater good of our organization.

Do you know someone deserving of this honor?

To be eligible, candidates must be:

- An Allied member in good standing.
- A current or past volunteer on a CTA unit, committee, conference, or council.

Nomination process:

- A CTA member in good standing must nominate the individual by



completing the nomination form.

- Candidate must receive endorsement from their unit, committee, conference, or council leadership to confirm participation.

Submit nomination forms to membership@caltrux.org by Tuesday, December 23.

Nomination Form

EVENTS



CENTRAL VALLEY UNIT

UNIT MEETING

Guest Speaker:

**Assemblymember
Alexandra Macedo**

*Member of the Assembly
Transportation Committee*

This Thursday, December 11
11:45 - 1:00

Legend's Tap House & Grill
2910 Pea Soup Andersen Blvd., Selma

\$20 per person

Visit <https://bit.ly/4pUCN1B> to register
Appetizers will be served
Open to CTA Members
& Prospects



Assemblymember Alexandra Macedo represents **California's 33rd District** in the San Joaquin Valley. She was born and raised in Tulare to a family deeply rooted in south valley agriculture.

Prior to her election, she advised clients in environmental compliance and consulting, along with agricultural design and project management.

Don't miss this opportunity to meet the Assemblymember as she joins us to share her vision for issues critical to her constituents and address the challenges facing our trucking industry.

REGISTER NOW!

CALIFORNIA TRUCKING ASSOCIATION'S

72ND ANNUAL MEMBERSHIP CONFERENCE

JAN 21-23
2026



NES

Your Partner for Storm Water Compliance

Storm Water Membership Benefits Include

- Simplified form templates
- Semi-annual live training
- Sampling supplies and analysis of results
- Draft required Water Board reports
- Technical support and regulatory correspondence
- Annual confidential inspections to keep your facility in compliance



**INTEGRATED
SOLUTION**

WEIGH STATION BYPASS
TOLL PAYMENT SERVICES
FLEET DATA INSIGHTS

Ask about a **free trial offer**
to see for yourself.

Save more time, fuel, and money with PrePass!



866.228.1424
PrePass.com/CA



GREG DUBUQUE

LIBERTY LINEHAUL WEST
Contributor Since 2010

*"In our regulatory environment, everyone
needs to be a part of CARGO PAC!"*



MAKE A DIFFERENCE; DONATE TODAY!



- | | | |
|-------------------------------------|---|---------------------------|
| 1 Drainage Restoration | 4 Yuba Pass Separation Overhead Bridge | 7 WB I-80 Restripe |
| 2 Monte Vista Pavement Rehab | 5 Wrong Way Driver Prevention Safety Impr. | |
| 3 CMS Sign Replacement | 6 Soda Springs Pavement Rehab | |

Eastbound I-80

- Monte Vista Pavement Rehabilitation Project
 - **Between Monte Vista and Drum Forebay, various lane and ramp closures are scheduled around the clock from 6 a.m. Monday, December 8 through 11 a.m. Friday, December 12. Work is also scheduled from 6 a.m. to 11 a.m. Saturday, December 13.**
 - **Baxter on- and off-ramps are closed until further notice. Motorists will detour eastbound to Drum Forebay and return westbound on I-80 to Baxter.**
- Yuba Pass Separation Overhead Bridge Project
 - **Between Yuba Gap and the junction with SR 20, various lane closures are scheduled around the clock from midnight Sunday, December 7 through 9 a.m. Friday, December 12.**
 - **Yuba Gap off- and on-ramps and eastbound I-80 off-ramp to SR 20 are closed until further notice. Motorists will detour eastbound to Eagle Lakes Road and return westbound on I-80 to SR 20 or Yuba Gap.**
- **Emergency Culvert Repairs between Boca and the Nevada state line, traffic breaks are scheduled for scaling operations from 9 a.m. to 3 p.m. Tuesday, December 9 through Thursday, December 11.**

Westbound I-80

- **Emergency Culvert Repairs between the Nevada state line and Boca, traffic breaks are scheduled for scaling operations from 9 a.m. to 3 p.m. Tuesday, December 9 through Thursday, December 11. Additional lane closures are possible to facilitate moving equipment, check QuickMap for any updates.**
- **Yuba Pass Separation Overhead Bridge Project between the junction with SR 20 and Yuba Gap, various lane closures are scheduled around the clock from midnight Sunday, December 7 through 9 a.m. Friday, December 12.**
- **Monte Vista Pavement Rehabilitation Project between Drum Forebay and Monte Vista, various lane and ramp closures are scheduled around the clock from 6 a.m. Monday, December 8 through 6 a.m. Sunday, December 14.**



Eastbound SR 20

- Yuba Pass Separation Overhead Bridge Project
 - **SR 20 on-ramp to eastbound I-80, scheduled to be intermittently closed from midnight Sunday, December 7 through 9 a.m. Friday, December 12. When closed, motorists will detour westbound to Emigrant Gap and head back eastbound on I-80.**
 - **SR 20 on-ramp to westbound I-80, will be intermittently closed until further notice. Motorists will detour eastbound to Eagle Lakes Road and head back westbound on I-80.**

HELP DESK

Compliance Confusion? Help Desk Has Your Solutions!

Remember to use the “Help Desk Online Contact Form” when you have a compliance or regulatory question on an issue.

The CTA Help Desk Online Contact Form is an exclusive member benefit designed to help with assisting various questions including:

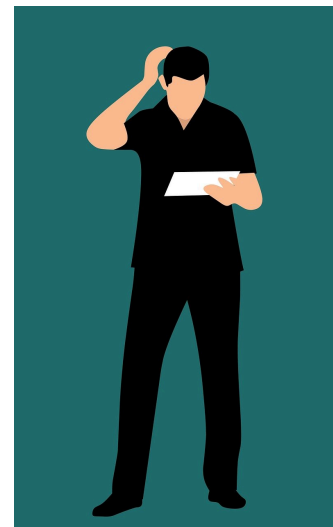
- Driver qualification rules
- Drug testing questions
- Federal and California motor carrier safety regulations
- Log book/Hours-of-service regulations
- Vehicle load & securement rules
- Environmental regulations
- Hazardous materials regulations

Visit www.caltrux.org/compliance-help-desk/, or email helpdesk@caltrux.org.

Please be sure to include as much detail and information as possible. CTA’s Government Affairs team will do their best to get back to you in timely manner.

Compliance Confusion? Help Desk Has Your Solutions!

Remember to use the “Help Desk Online Contact Form” when you have a compliance or regulatory question on an issue.

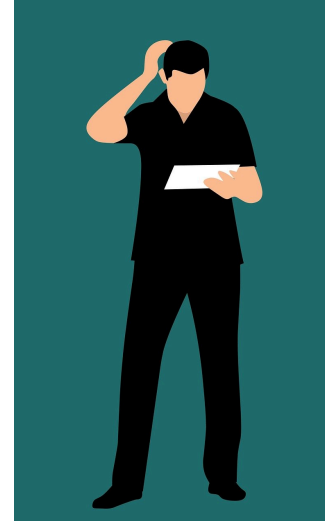


The CTA Help Desk Online Contact Form is an exclusive member benefit designed to help with assisting various questions including:

- Driver qualification rules
- Drug testing questions
- Federal and California motor carrier safety regulations
- Log book/Hours-of-service regulations
- Vehicle load & securement rules
- Environmental regulations
- Hazardous materials regulations

Visit www.caltrux.org/compliance-help-desk/, or email helpdesk@caltrux.org.

Please be sure to include as much detail and information as possible. CTA's Government Affairs team will do their best to get back to you in timely manner.



[Contact the Help Desk](#)

DRIVER SAFETY EDUCATION

Brush Up on Safety Issues With TREDs

CTA is partnered with UC San Diego's [Transportation Research and Education for Driving Safety Center \(TREDs\)](#) to prevent crash-related morbidity and mortality by improving safe driving behaviors.

TREDs offers two courses aimed at preventing commercial motor vehicle-involved crashes from distracted and substance-impaired driving. They partner with the CTA to make courses available to the commercial motor vehicle industry.

Courses are approximately 60-minutes in length and available in both English and Spanish.



Courses focus on distraction related to the use of cell phones and electronic devices and...

Scope of the problem
Risk & consequences
Rules & regulations
Distracted, fatigued & drowsy driving
Work zone safety



Courses focus on substances most commonly reported to the FMCSA Drug & Alcohol Clearinghouse and...

Scope of the problem
Contributing factors
Risks & consequences
Laws & testing procedures
Strategies to drive-drug free

[Learn More](#)

UPCOMING EVENTS

[Upcoming events can be accessed via CTA's Events Calendar](#)



CIRCLE CLUB SPONSOR

Circle Club Sponsor companies have shown a special commitment to CTA members and the trucking industry.

We encourage our members to take advantage of these special offers and support these affiliated businesses.

[Click here to view CTA Circle Club Sponsor companies and their promotions.](#)

CTA-SUPPORTING, CTA-OWNED & OPERATED



- DOT COMPLIANCE
- EMPLOYER PROGRAMS
- BACKGROUND SCREENING
- MOBILE DRUG TESTING
- MRO SERVICES
- DRUG TESTING SOFTWARE

A portion of every dollar spent with TSC goes back to support the CTA. That's good for you, and good for trucking.

Experience exclusive member treatment with excellent customer service, reliability, and added value.

[Contact Levi Ochotorena for more information and a CTA Member-exclusive price quote.](#)



The Caltrux Magazine Bookshelf: Digital Back Issues

For decades **Caltrux Magazine** has informed and entertained our members with news and features regarding the transport business, our legislative challenges and wins, and in-depth focus on the movers and shakers of California trucking.

The [Caltrux Bookshelf](#) uses a digital flipbook format to display these magazine issues in high quality, complete with articles and advertisements - identical to what you already receive in the mail.